

# 1 EU - TYPE EXAMINATION CERTIFICATE

## 2 Product or Protective System Intended for use in Potentially Explosive Atmospheres Directive 2014/34/EU – Annex III

3 EU - Type Examination Certificate No.: **EMT17ATEX0058X (incorporating variation V1)**

4 Product: **Electromagnetic Transmitter, EMTx30 Family**

5 Manufacturer: **Online Electronics Limited**

6 Address: **Online House, Blackburn Business Park, Woodburn Road, Blackburn, Aberdeen, AB21 0PS, United Kingdom**

7 This product and any acceptable variation thereto is specified in the schedule to this certificate and the documents therein referred to.

8 Element Materials Technology, Notified Body number 2812, in accordance with Article 17 of Directive 2014/34/EU of the European Parliament and of the Council, dated 26 February 2014, certifies that this product has been found to comply with the Essential Health and Safety Requirements relating to the design and construction of products intended for use in potentially explosive atmospheres given in Annex II to the Directive. The examination and test results are recorded in the confidential report **TRA-038076-33-00A**.

9 Compliance with the Essential Health and Safety Requirements has been assured by compliance with:  
**EN 60079-0:2012/A11:2013 EN 60079-1:2014**

Except in respect of those requirements listed at section 18 of the schedule.

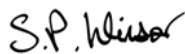
10 If the sign "X" is placed after the certificate number, it indicates that the product is subject to specific conditions of use specified in the schedule to this certificate.

11 This EU - TYPE EXAMINATION CERTIFICATE relates only to the design and construction of the specified product. Further requirements of the Directive apply to the manufacturing process and supply of this product. These are not covered by this certificate.

12 The marking of this product shall include the following:

 **II 2 G Ex db IIC T5...T6 Gb**

This certificate and its schedules may only be reproduced in its entirety and without change. This certificate is issued in accordance with the Element Materials Technology Ex Certification Scheme.



S P Winsor, Certification Manager

Issue date: 2019-11-01

Page 1

**13 SCHEDULE TO EU - TYPE EXAMINATION CERTIFICATE**

**14 CERTIFICATE NUMBER EMT17ATEX0058X (incorporating variations V1)**

**15 Description of Product**

The EMTx30X range is comprised of pipeline pig monitoring transmitters housed in a stainless steel or titanium cylindrical enclosure.

The equipment may be powered by 2, 3, 4 or 5 x C cells (Alkaline or Lithium). The enclosure is comprised of a cylindrical housing and two 1.75"-16TPI STUB ACME threaded end caps. The end caps may be one of the following: Standard, Bleed screw, Magnetic or Pressure switch.

The Bleed screw end cap is identical to the standard end cap with an additional M6 x 1.0 threaded joint between the end cap lid and alloy bronze bleed screw (blanking element).

The pressure switch end cap is constructed with an additional cylindrical joint in the end cap lid between the alloy bronze piston, which is a push button used to activate the unit, and the end cap itself. In end use the EMTx30X is completely housed within a carrier specifically designed for the type of pipe to be inspected. Rating 18.5 Vdc Max 0.7 W

The equipment may include a Bluetooth radio device.

**16 Test report No. (associated with this certificate issue): TRA-038076-33-00A.**

**17 Specific Conditions of Use**

1. Only complete sets of new and identical cells must be used.
2. Only the following permitted batteries shall be used with the corresponding ambient temperature and T Class :

Cell Type	T <sub>amb</sub>	T Class
Duracell ID1400	-20°C to +50°C	T6
Duracell MN1400	-20°C to +50°C	T6
Duracell MX1400	-20°C to +50°C	T6
Saft LSH 14C	-40°C to +76°C	T6
Saft LSH 14C	-40°C to +80°C	T5
Varta 4914	-10°C to +46°C	T6
Energizer E93	-18°C to +50°C	T6

3. Batteries must be installed into the enclosure in accordance with the orientation detailed on the marking label.
4. Repair of flame paths is not permitted by the end user.
5. Do not open when an explosive gas atmosphere may be present.
6. The equipment must be installed, such that ignition sources due to impact and friction sparks are excluded.



Attention is drawn to the operating and installation instructions which may contain useful information in relation to conditions of use.

**SCHEDULE TO EU - TYPE EXAMINATION CERTIFICATE**  
**CERTIFICATE NUMBER EMT17ATEX0058X (incorporating variation V1)**

**18 Essential Health and Safety Requirements (Directive Annex II)**

In addition to the Essential Health and Safety Requirements covered by the standards listed at item 9, all other requirements are demonstrated in the relevant reports.

**19 Drawings and Documents**

The list of controlled technical documentation is given in Appendix A to this schedule.

**20 Routine Tests**

None.

**21 Specific Conditions for Manufacture**

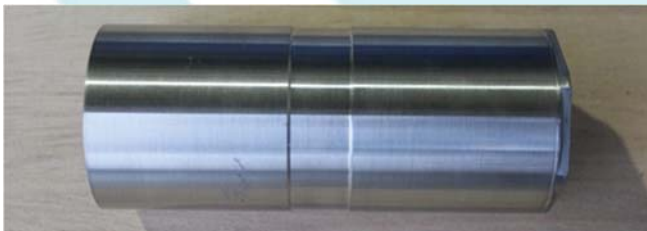
None.

**22 Photographs**

EMTx30X-0C5

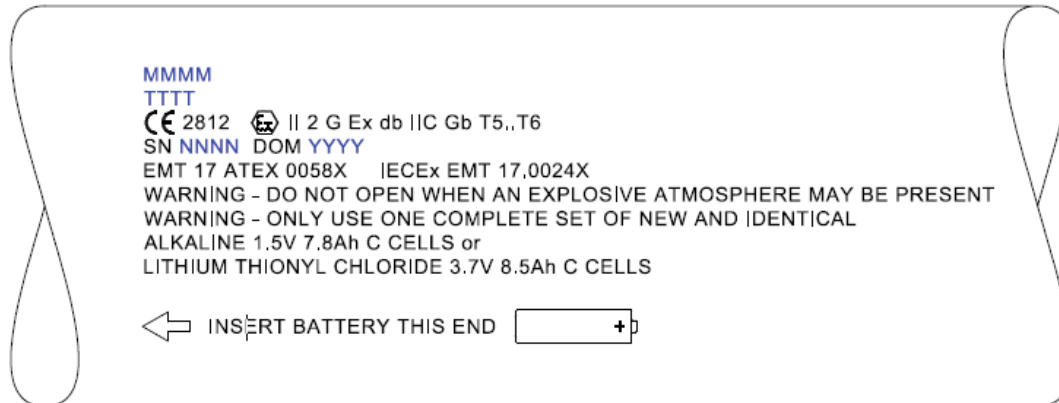


EMTx30X-0C2



**SCHEDULE TO EU - TYPE EXAMINATION CERTIFICATE**  
**CERTIFICATE NUMBER EMT17ATEX0058X (incorporating variation V1)**

**23 Details of Markings**



**24 Details of Variations to this Certificate**

This certificate is a consolidated certificate and reflects the latest status of the certification, including the following variations:

- Variation V1 - This certificate was originally issued by Notified Body number 0891 under Directive 2014/34/EU. The technical file has been transferred to Element Notified Body number 2812 without further assessment or evaluation.

**25 Notes to CE marking**

In respect of CE Marking, Element Materials Technology accepts no responsibility for the compliance of the product against all applicable Directives in all applications.

**26 Notes to this certificate**

Element Materials Technology certification reference: NR-ONLQ-0010

Throughout this certificate, the date format yyyy-mm-dd (year-month-day) is used.

Notified Body number 2812 is the designation for Element Materials Technology Rotterdam BV.

**27 Conditions for the validity of this certificate**

This certificate remains valid for so long as:

- (i) The equipment listed in section 4 is manufactured in accordance with the documents listed in Appendix A of this certificate.
- (ii) The standards listed in section 9 of this certificate continue to satisfy the Essential Health and Safety Requirements of Annex II of Directive 2014/34/EU and the generally acknowledged state of the art (e.g. as determined by the publishers of those standards).

**SCHEDULE TO EU - TYPE EXAMINATION CERTIFICATE**  
**CERTIFICATE NUMBER EMT17ATEX0058X (incorporating variation V1)**

**APPENDIX A - TECHNICAL DOCUMENTS**

<b>Title:</b>	<b>Drawing No.:</b>	<b>Rev. Level:</b>	<b>Date:</b>
ATEX IECEX File	EMTx30_X001	B00	2019-10-16
Safety Instructions	EMTx30_X002	B00	2019-10-16
Markings	EMTx30_X009	B00	2019-10-16

