

EMTx40 and Config App

Quick Start Guide

Switch Transmitter On

Locate battery endcap by finding the battery symbol. Locate and remove the bleedscrew, turning counterclockwise. Remove the insulating washer from the bleedscrew and store in a safe place.

Refit the bleedscrew to switch the transmitter on. The transmitter will start transmitting 15 seconds after the bleedscrew has been fitted.

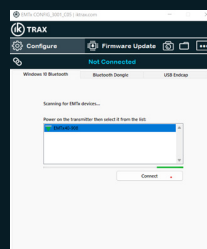


Connection to the EMTx Config App

Switch the transmitter on using the above steps.

Launch the Android or Windows App on your phone or tablet. The Windows App will automatically start scanning. Press "Start Scan" on the Android App.

On Android, tap the transmitter name in the list, or click "Connect" button on Windows to proceed.



Once connected, make the necessary changes and click "Sync" to update the device before disconnecting.

Once disconnected from the App, the transmitter will start transmitting as per the new configuration.

Turning Off

Remove the bleedscrew from the battery endcap. Replace the insulating washer and insert the bleedscrew for safe storage.

